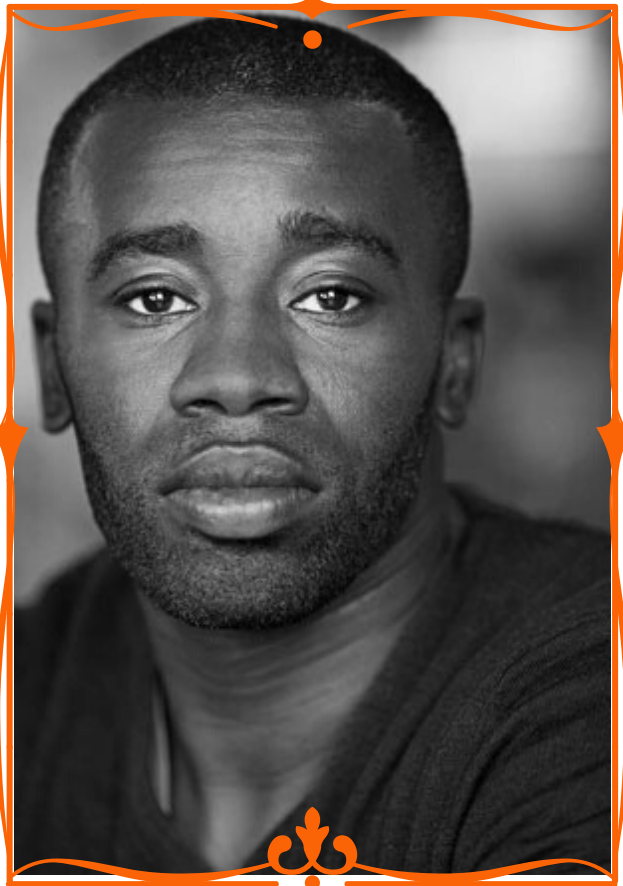


Fantastic faces

Chris Ofili

1968-



Chris Ofili is a British painter of Nigerian descent who has lived in Trinidad and Tobago since 2005. He grew up in Manchester and studied art in London where he became part of the Young British Artists movement.

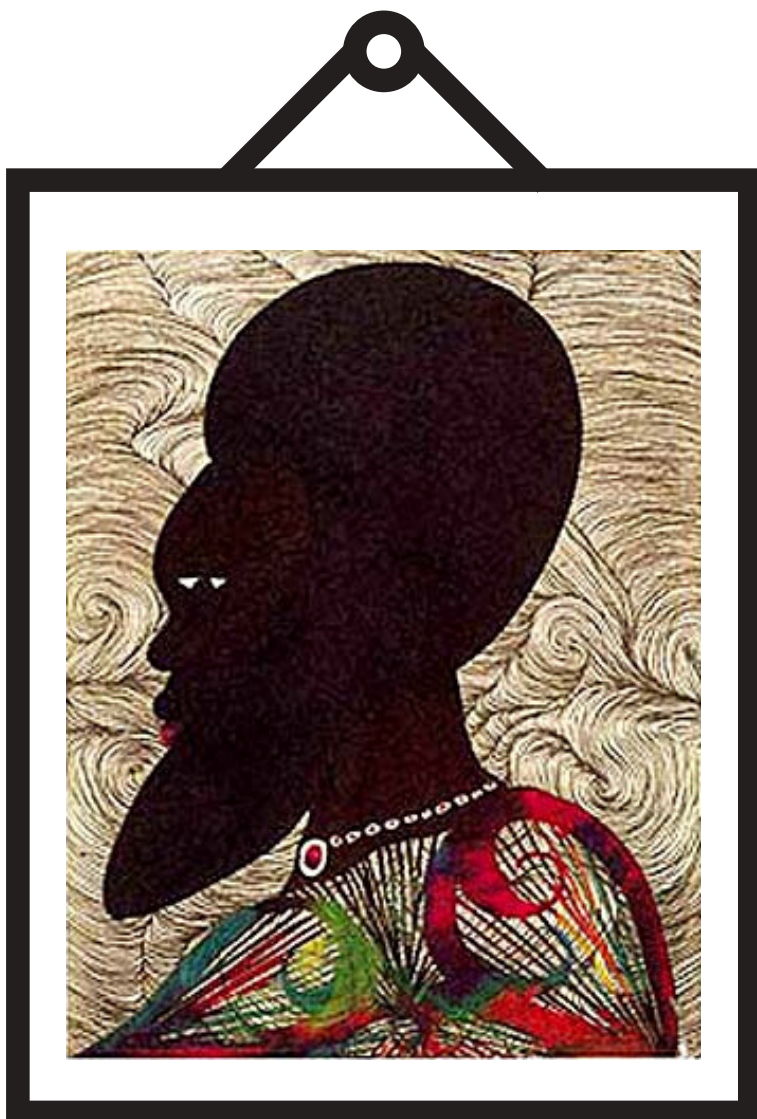
He is a prize winning artist who is most famous for creating brightly coloured paintings that include a collage of glitter, resin and elephant dung. Most of his artwork is based around the themes of racism, black history and the lives of black people today.

You will -
learn about the artist

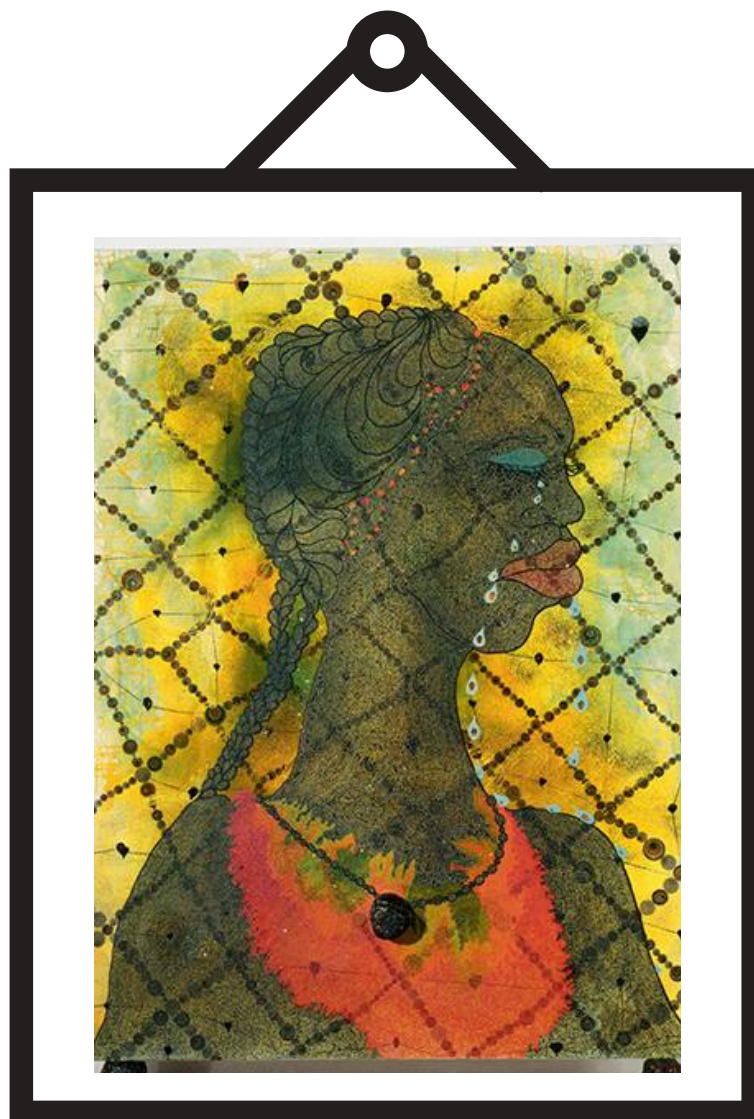
Learn about
different patterns

create miniature
portraits

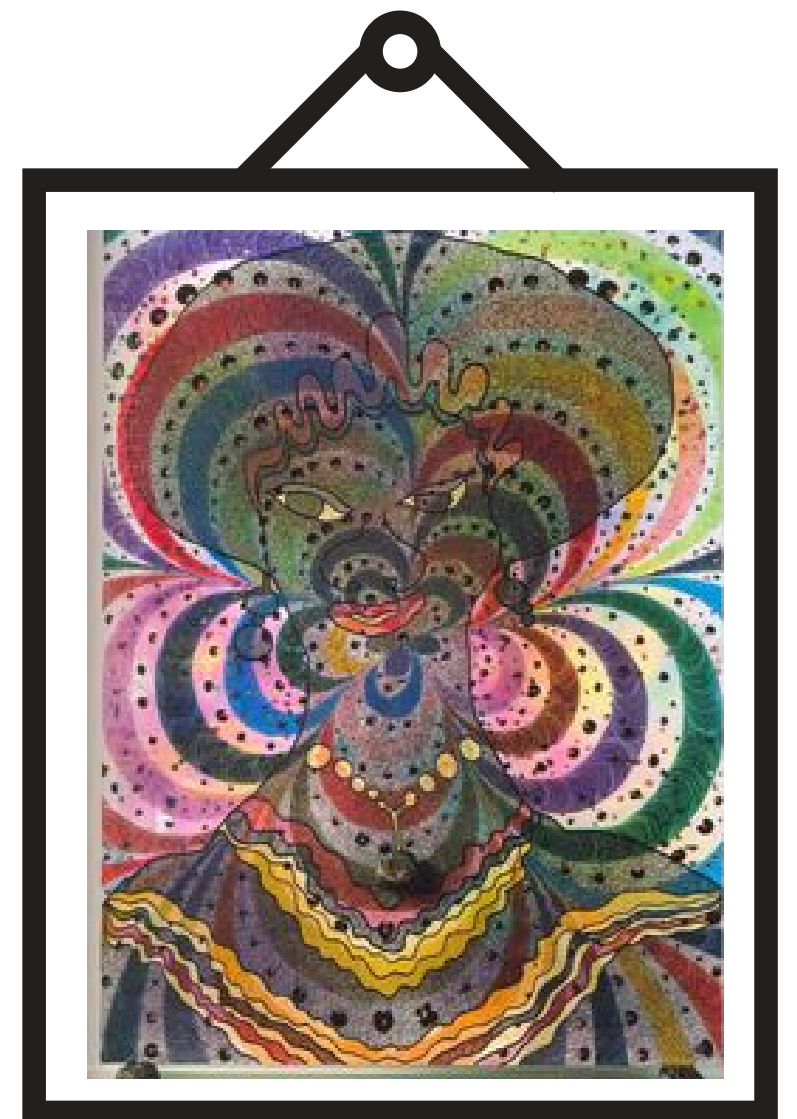
Discuss Look closely at the pictures below. which painting is your favourite? Why?



Regal

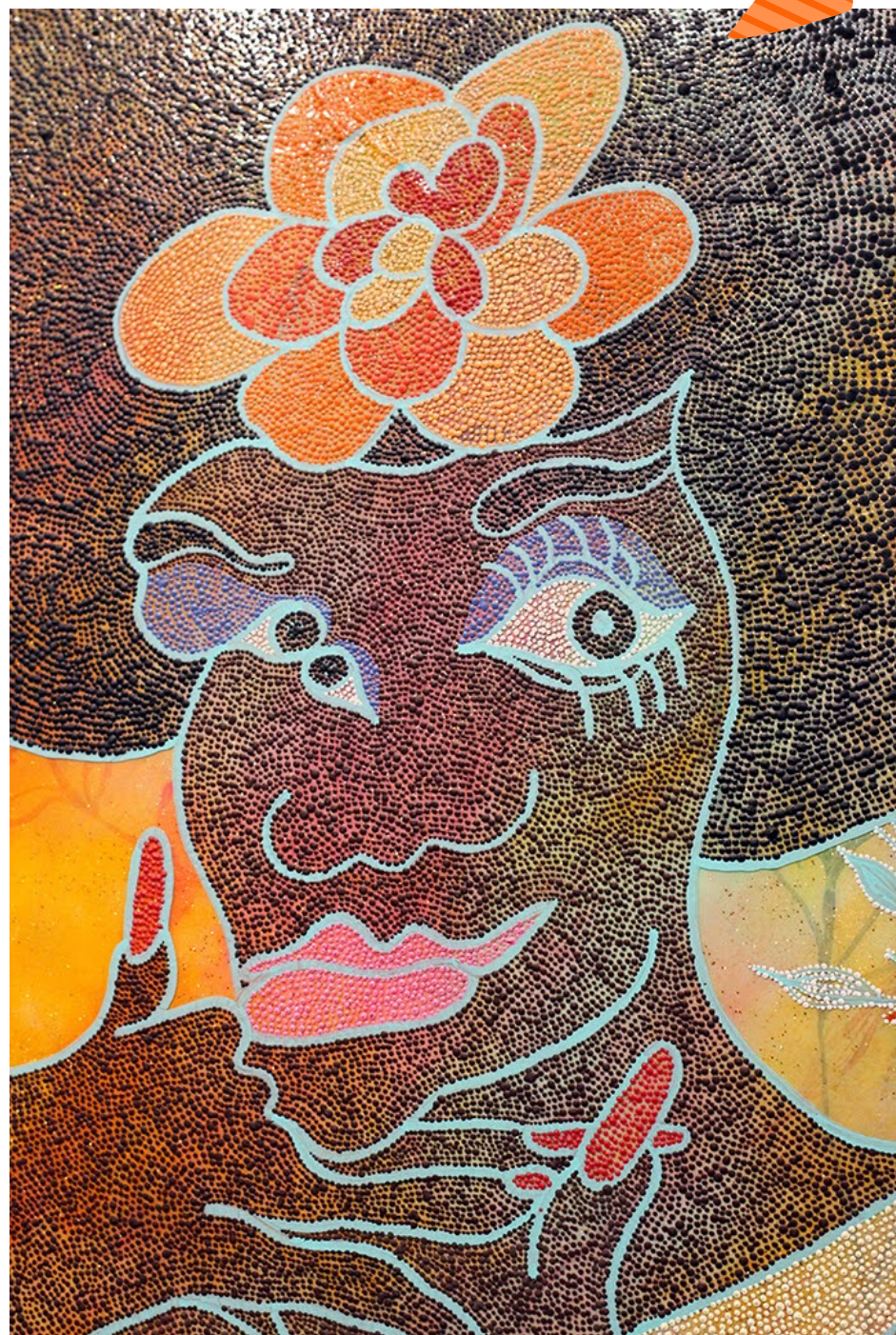


No Woman No Cry



She

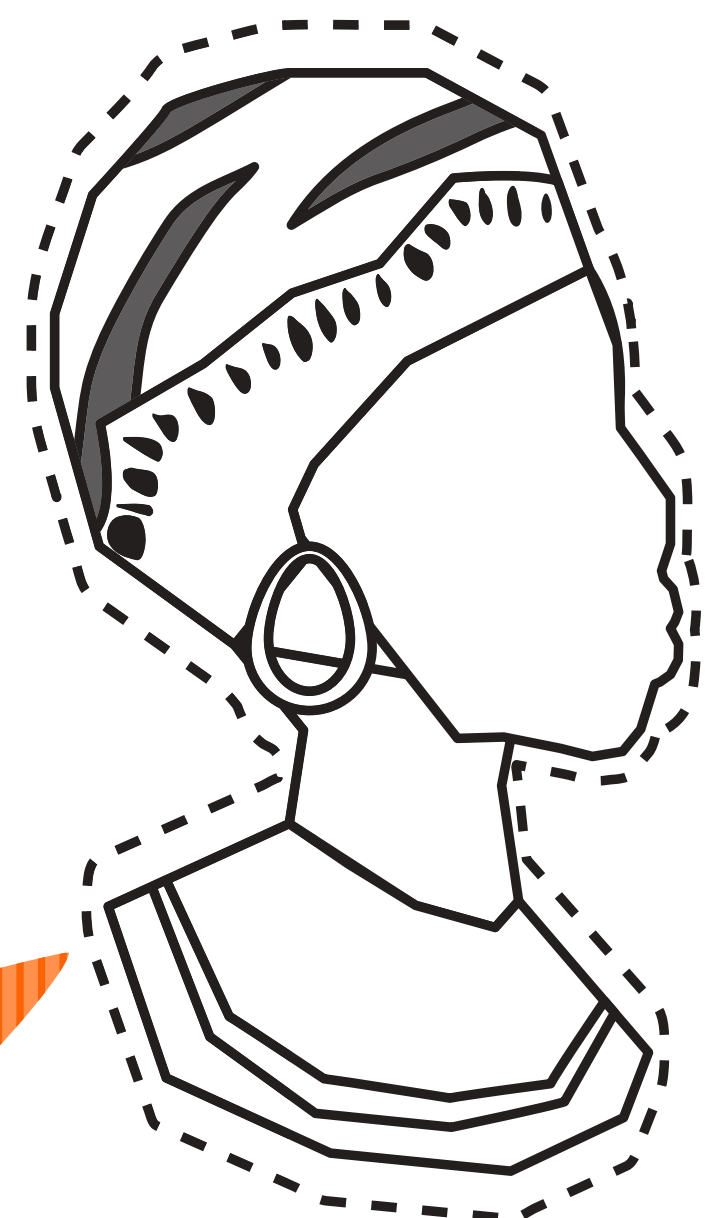
Texture



Below is part of a painting called 'Blossom', notice how the artist has used lots of dots of different colours to create texture.



Colour the image opposite and then fill it with dots.



For ten years Chris Ofili painted a small portrait everyday, he did this before he began his other art work as a warm up exercise and said it was "a bit like jumping on a trampoline in the morning to get started and get the energy flowing." In 2005, 181 of these portraits were shown in an exhibition called '*Afro Muses*'. The portraits are pictures of imaginary people inspired by memories, colours, patterns and historical figures. Each one is individualised by their clothing, jewellery and hairstyles. During the exhibition The portraits were displayed in groups or in pairs.

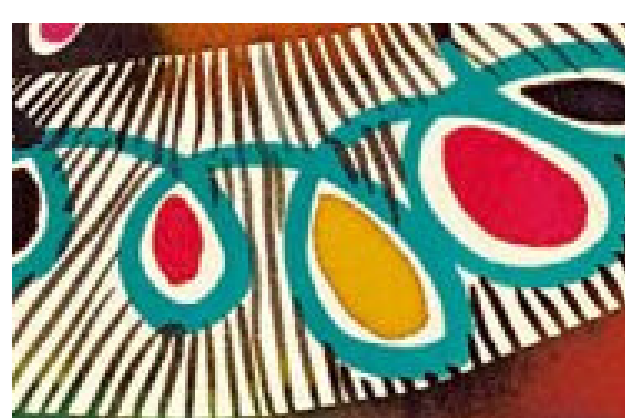


Discuss

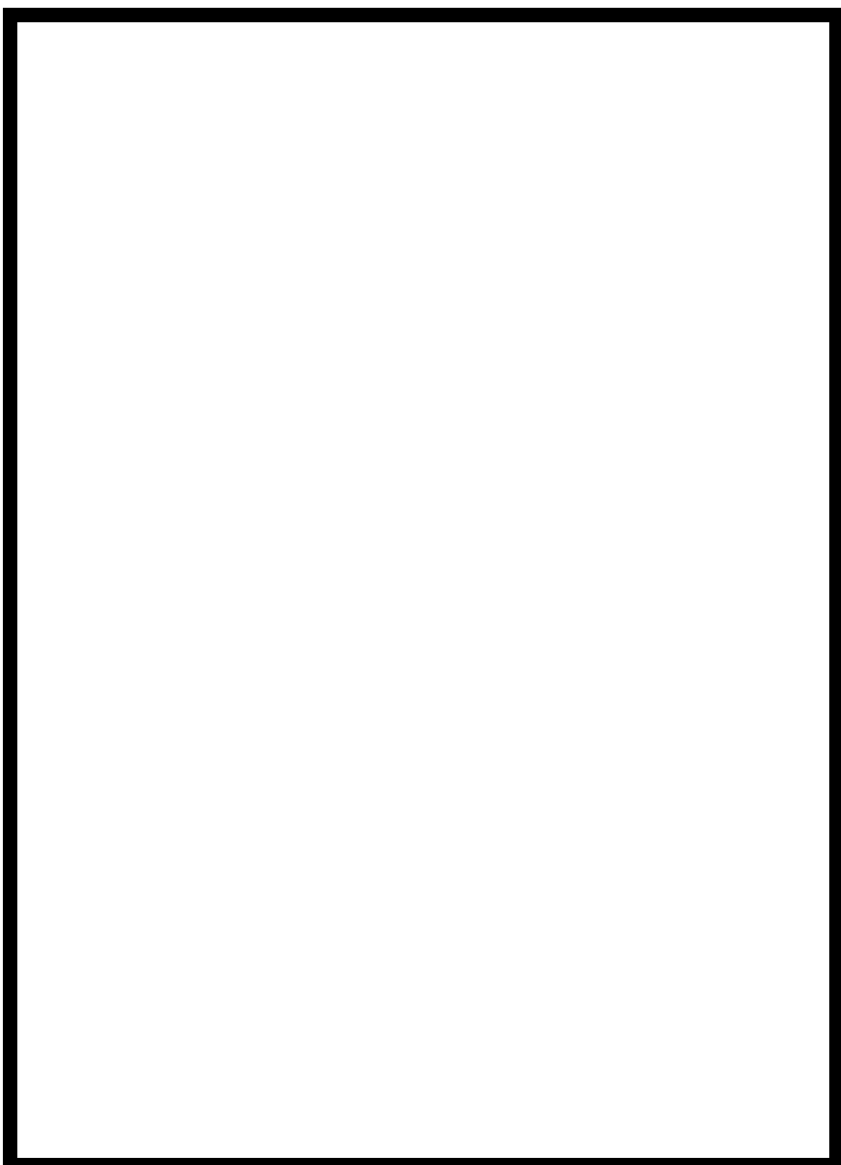
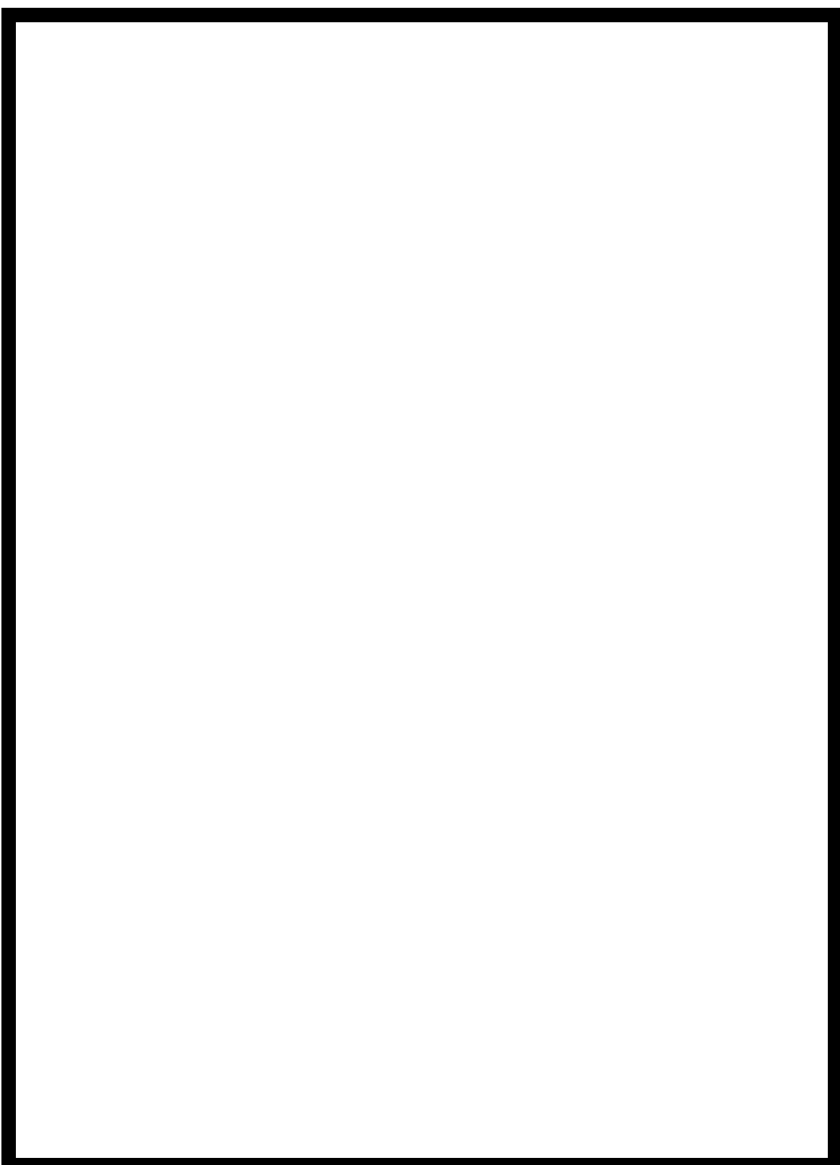
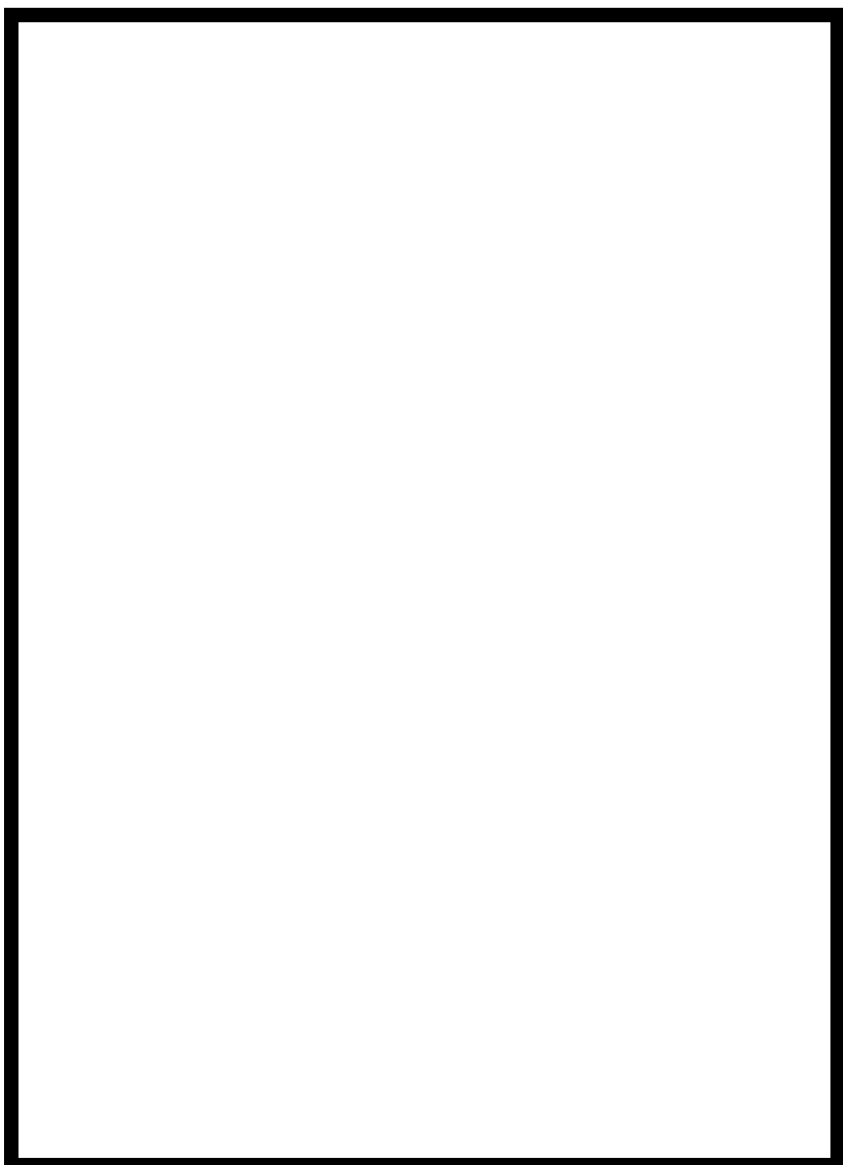
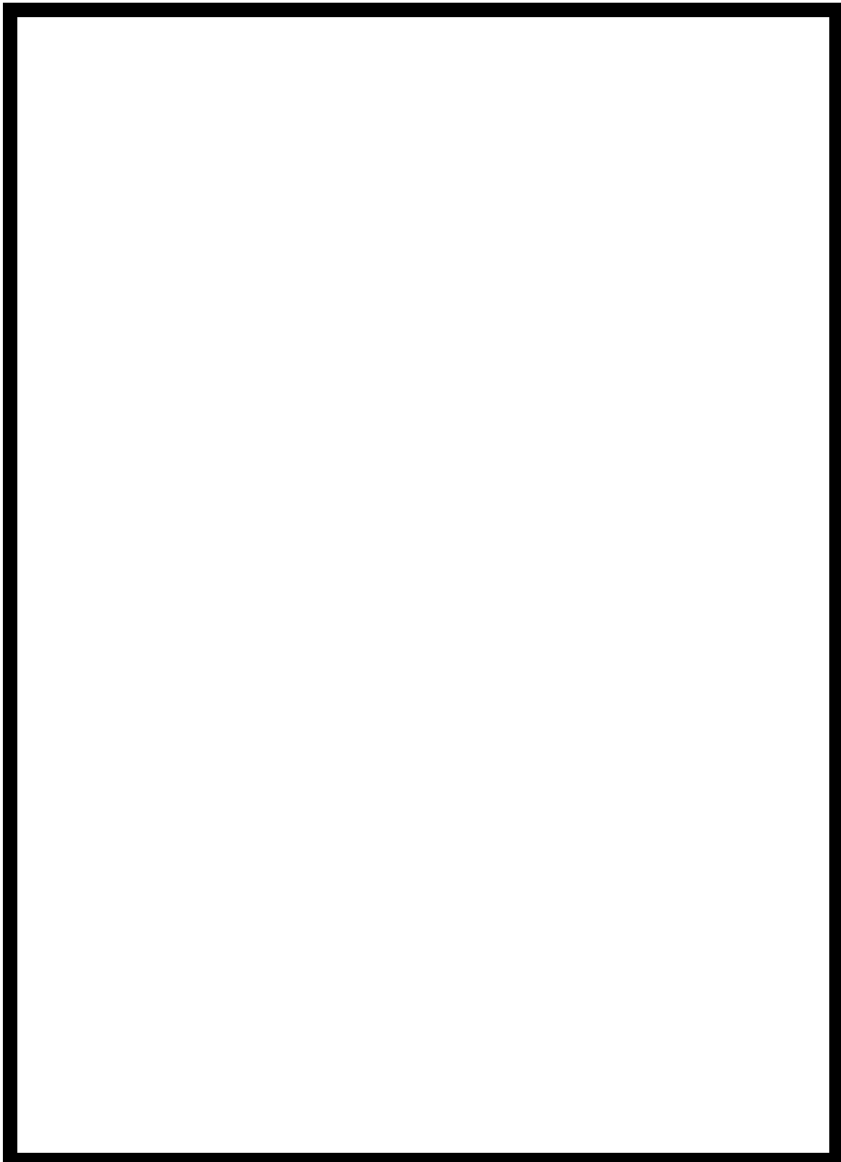
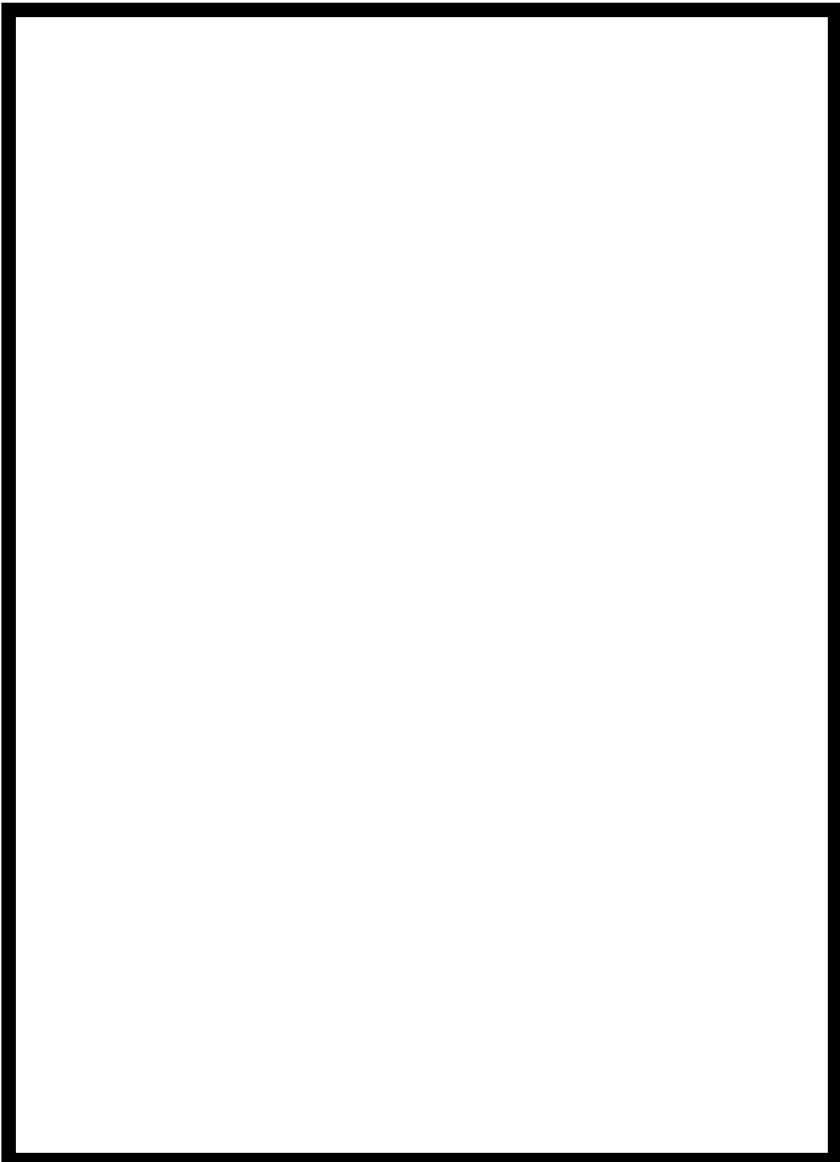
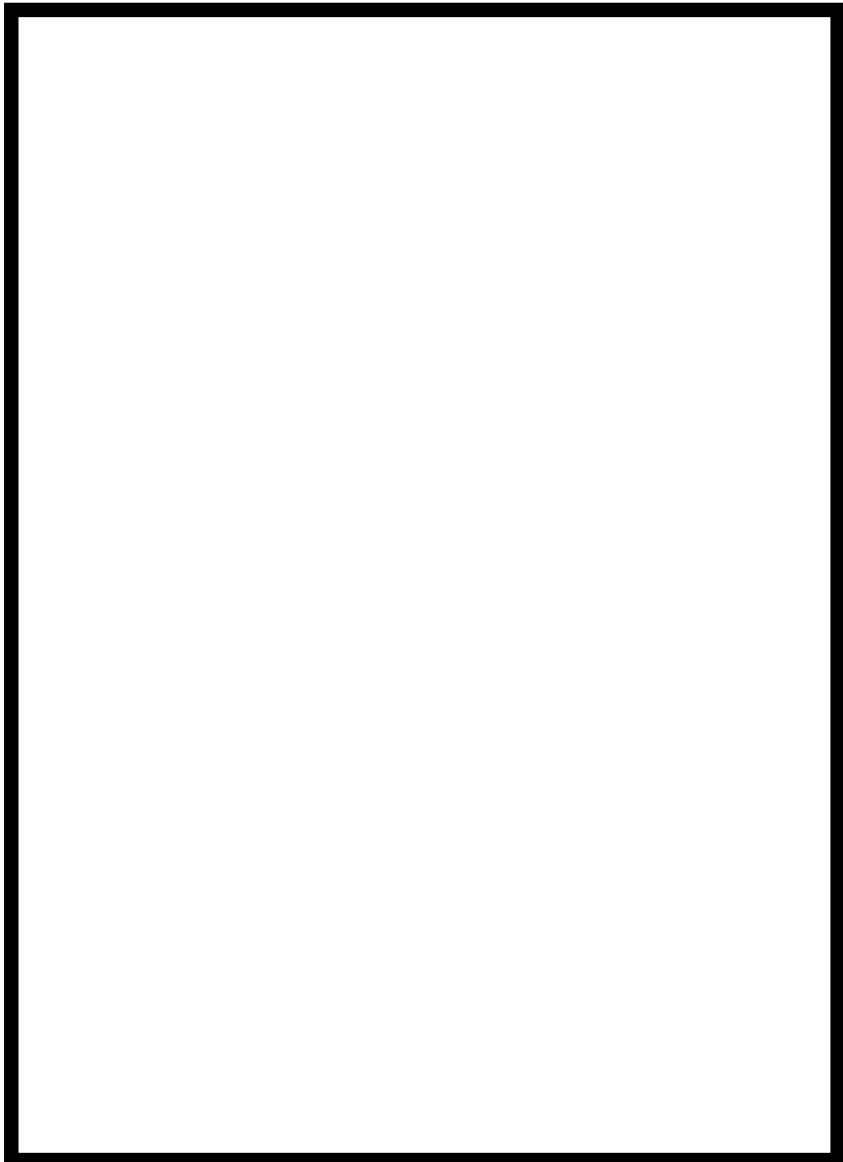
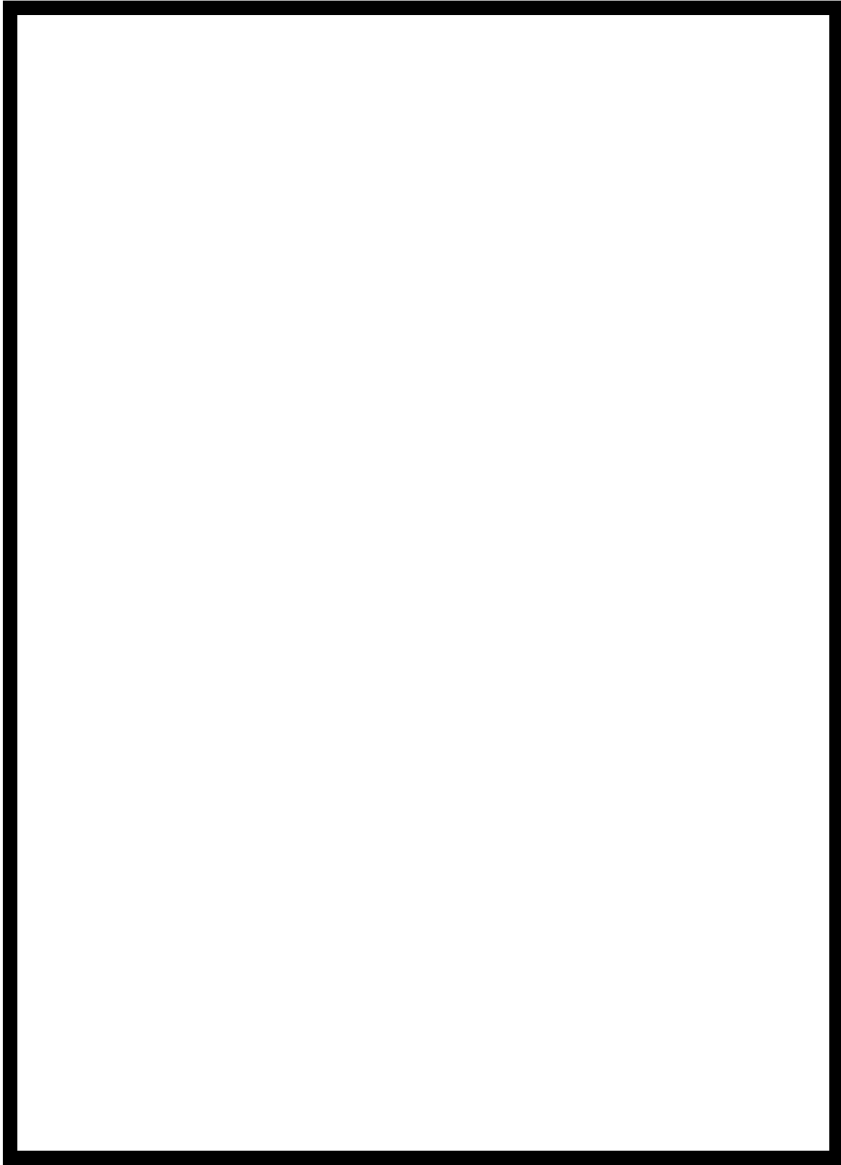
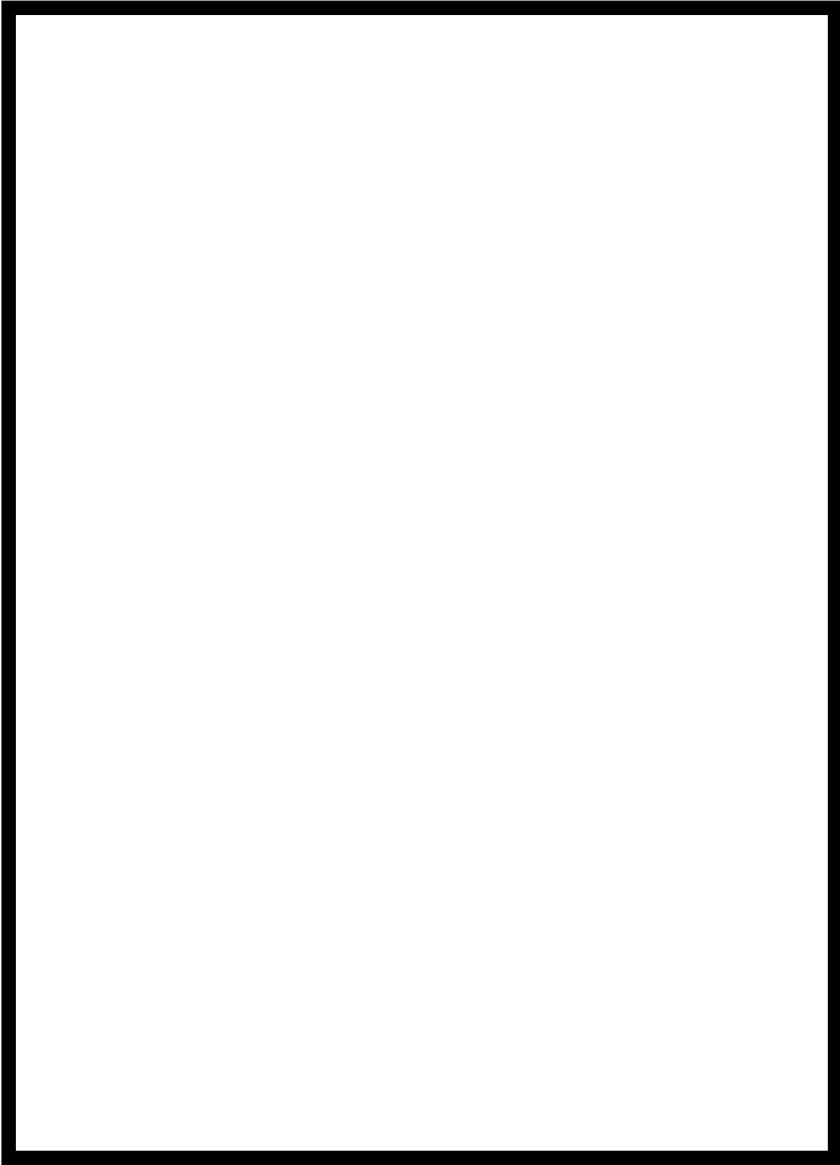
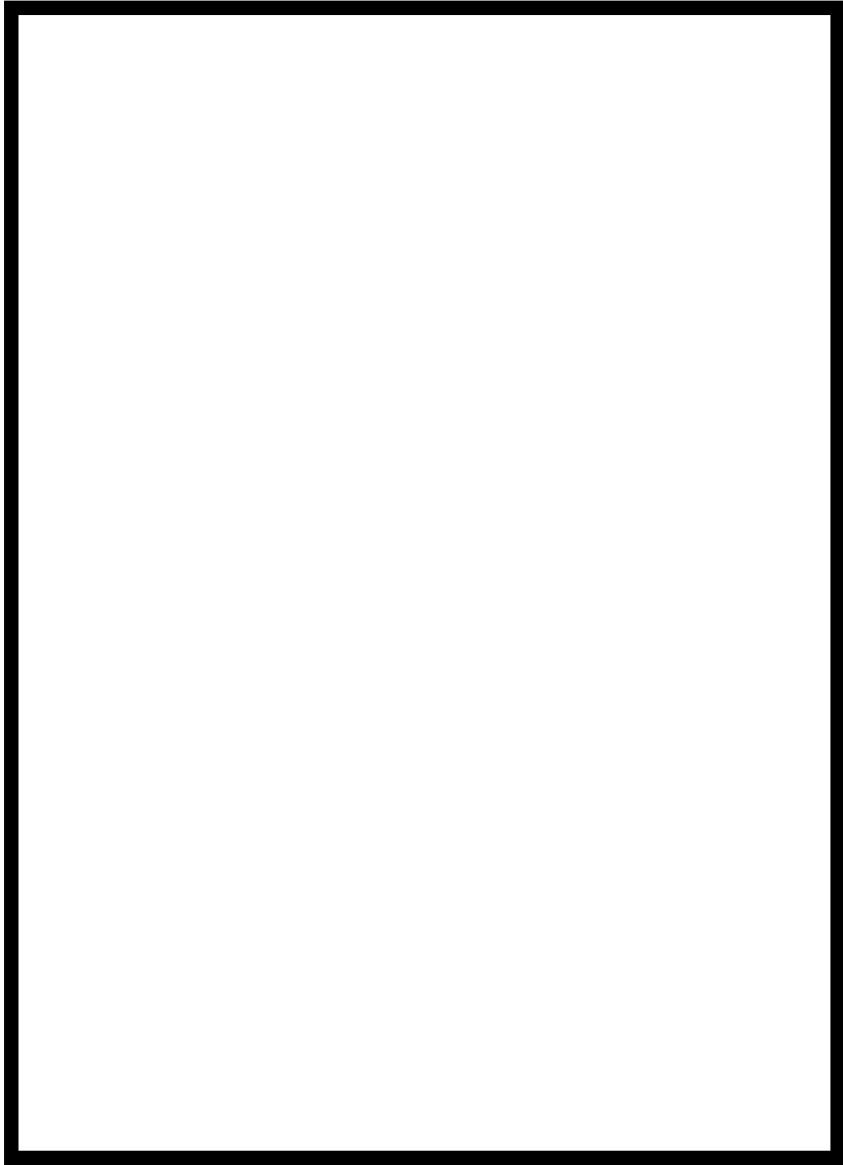
Look at the pictures above.

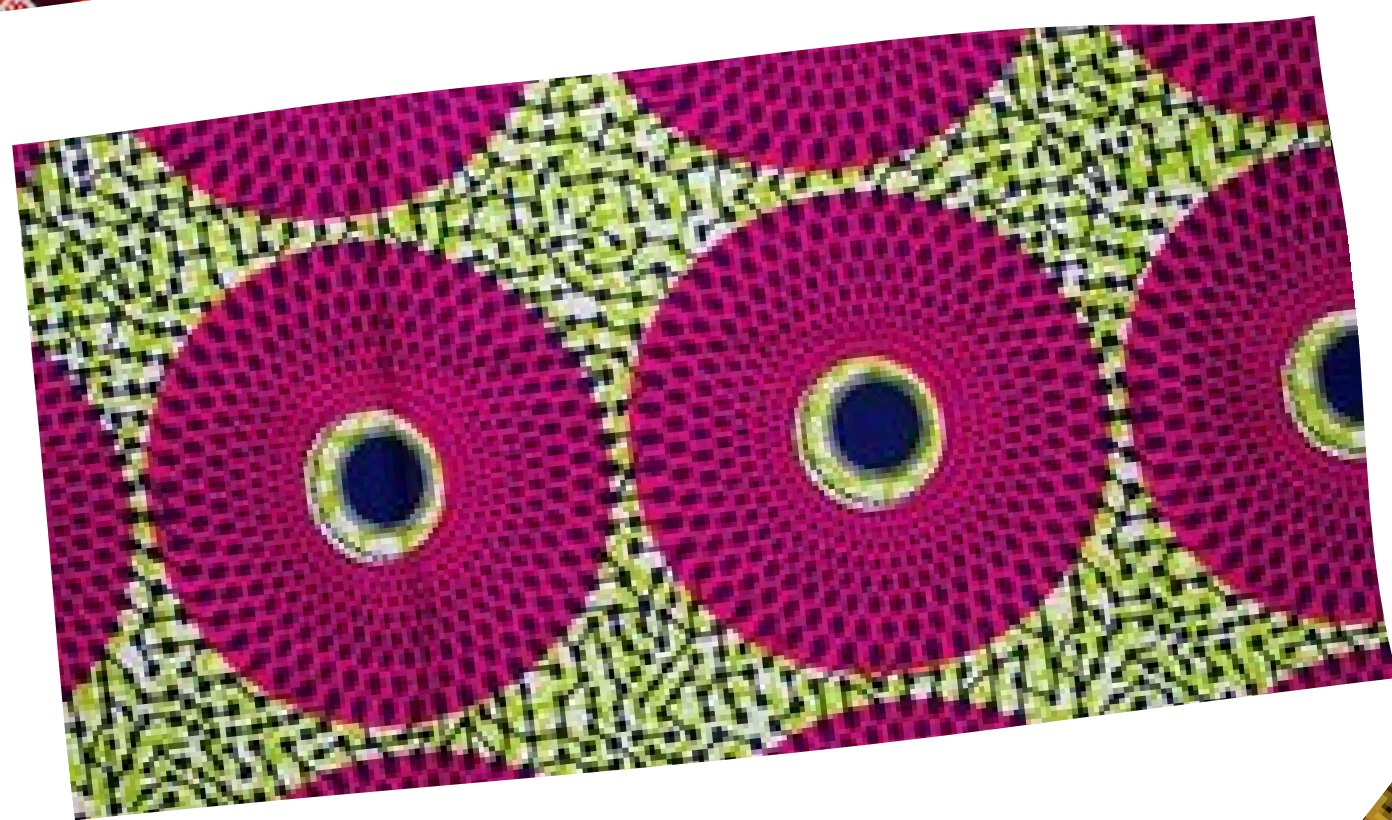
How long do you think it took Chris Ofili to paint each one? Why do you think this?

The patterns on the clothing are all inspired by traditional African prints. Try and copy the patterns in the boxes below



You are going to make your own set of Chris Ofili style portraits. In the space below sketch some of your ideas for patterns, hairstyles and jewellery.





**Fabric
ideas**

